

anna guaglione //
interior designer



PORT- FOLIO.

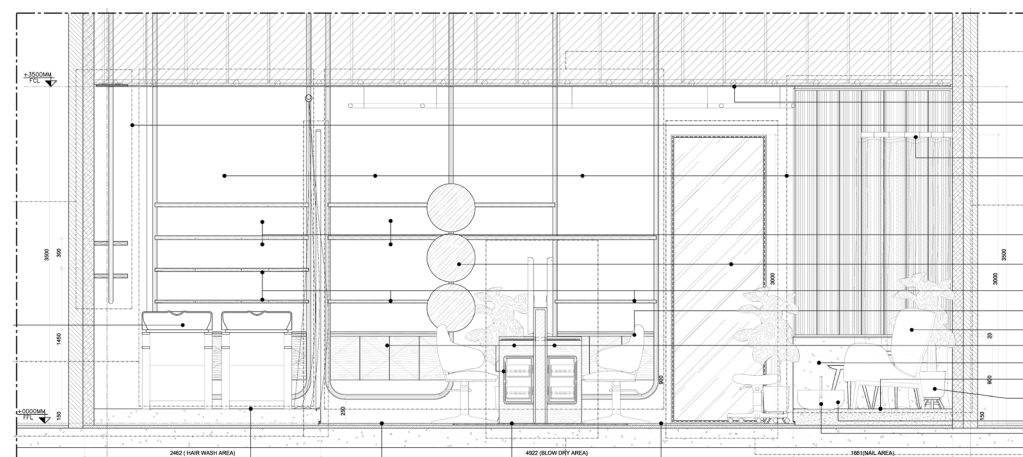
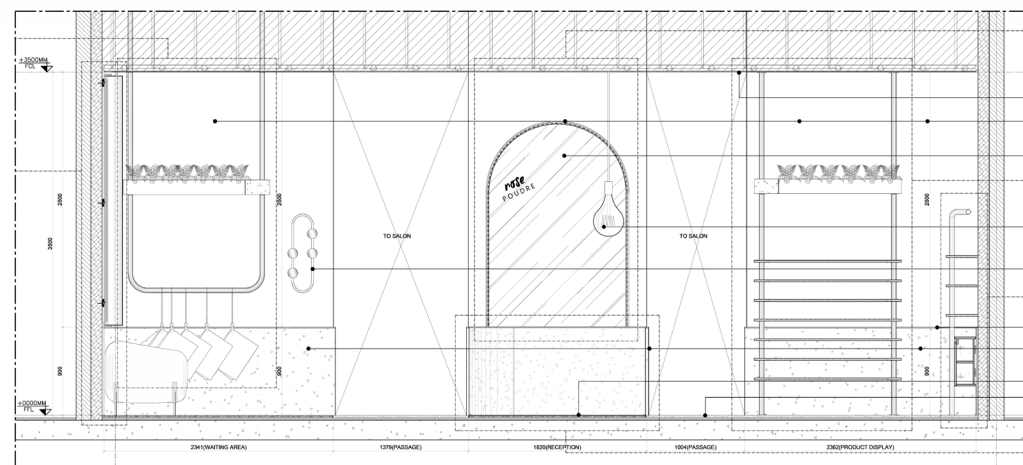
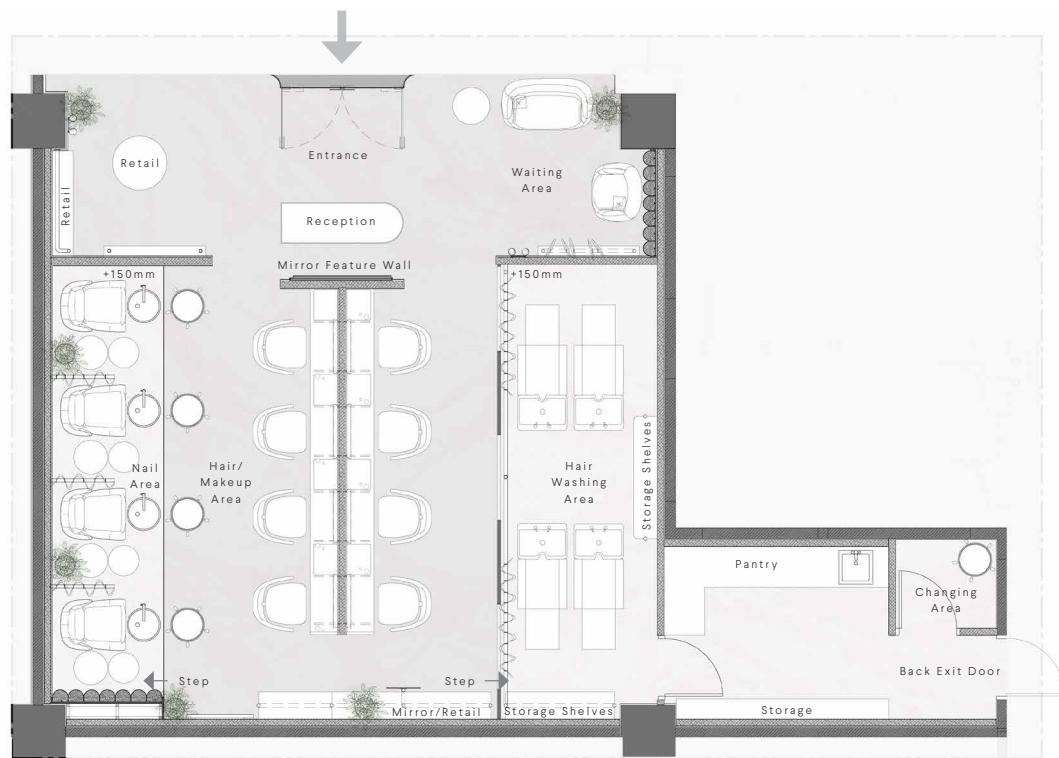
01/ ROSE POUUDRE.

LOCATION: Galleria Mall, Abu Dhabi, UAE

Rose Poudre, Galleria Mall is a total rebrand of the original blow out bar, expanding into a women's-only hair/nail/and makeup salon. I was tasked to redefine the design, adapting it to stand out with an identity that would be unique from its competitors. The concept was built around the idea of self-care, creating an experience inspired by feminine beauty and positivity, giving women confidence and time to feel good about themselves. A minimalistic design combined with refined details and materiality create an atmosphere that prioritizes both a healthy escape and a luxurious experience; using a color palette that creates a neutral backdrop to enhance the natural beauty of the customer. A cosy, at-home vibe is maintained by using large, comfortable furniture in the nail and reception areas, curtains, and locally hand-made wire art. Not wanting to go too feminine, grey concrete flooring and wall finishes were used to balance out the stronger more vibrant elements used throughout the space; rose gold, zebrano wood, salome marble, blue fabrics, and acrylic light panels.



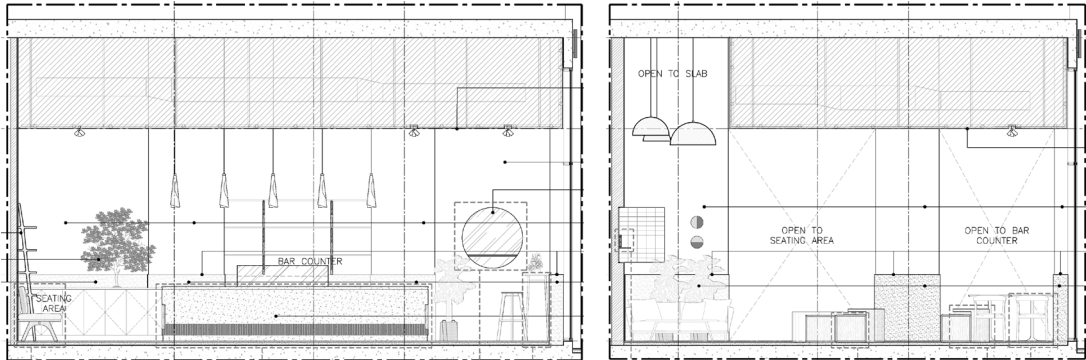
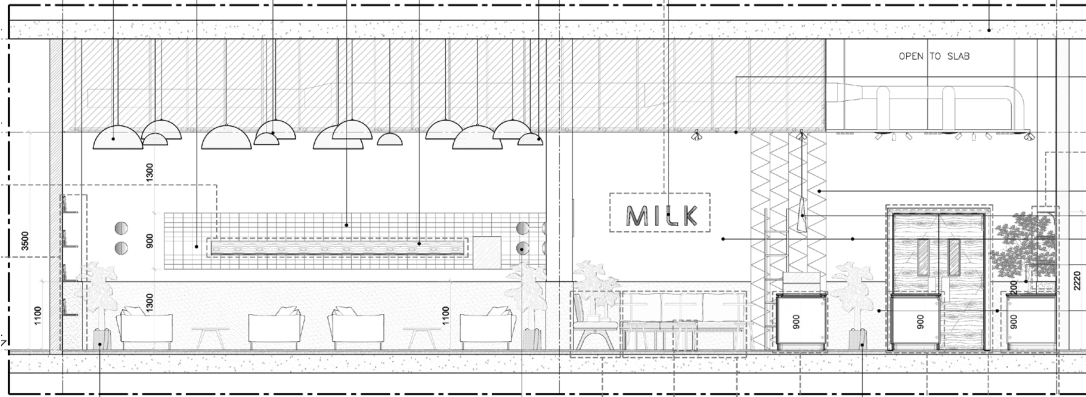
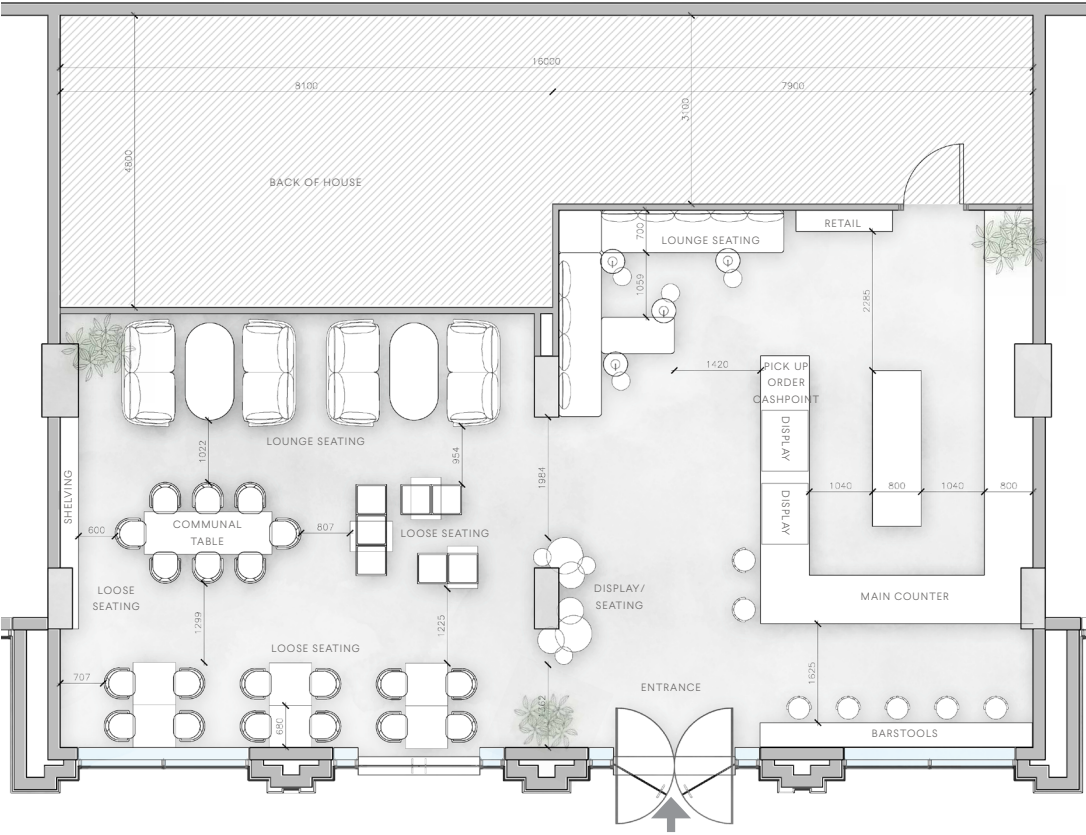
//feminine elegance

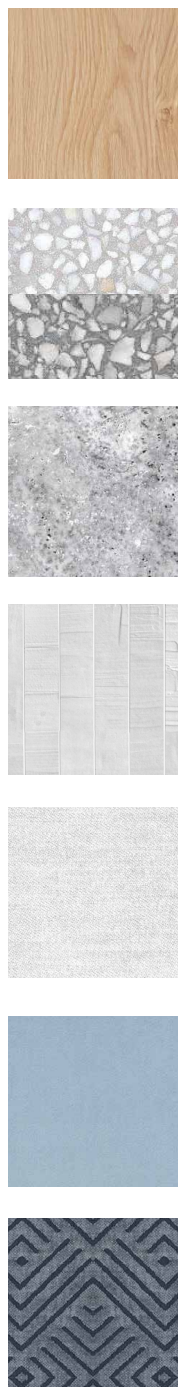




LOCATION: Wasl 51, Dubai, UAE

Milkbar is an Emirati-owned dessert shop and cafe, started by a baker and designer duo who have worked with desserts for the past 6 years. They wanted their colorful, tasty desserts to be an experience made for sharing, bringing families, friends and loved ones together. I was tasked with designing an inviting, memorable space; emphasizing the beauty and intricacy of the desserts themselves while retaining some design elements from the local Emirati culture. The space was inspired by a minimalistic Scandinavian style which captured the hearts of the owners while on a trip to Sweden. The use of irregular handmade tiles, Scandinavian furniture, and warm wood tones is balanced by the clean lines and shades of grey present throughout, creating a minimal but cozy space. Bespoke timber joinery pieces were designed to reinforce the concept's identity, while encouraging socialization with movable box seating and a cushy banquette sofa.





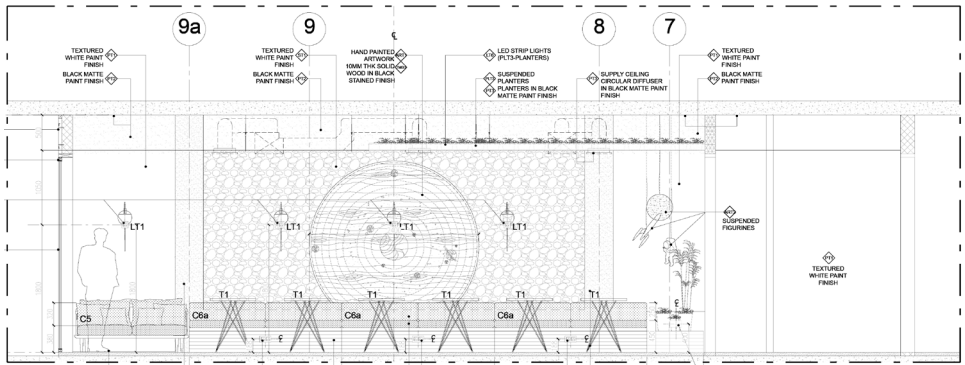
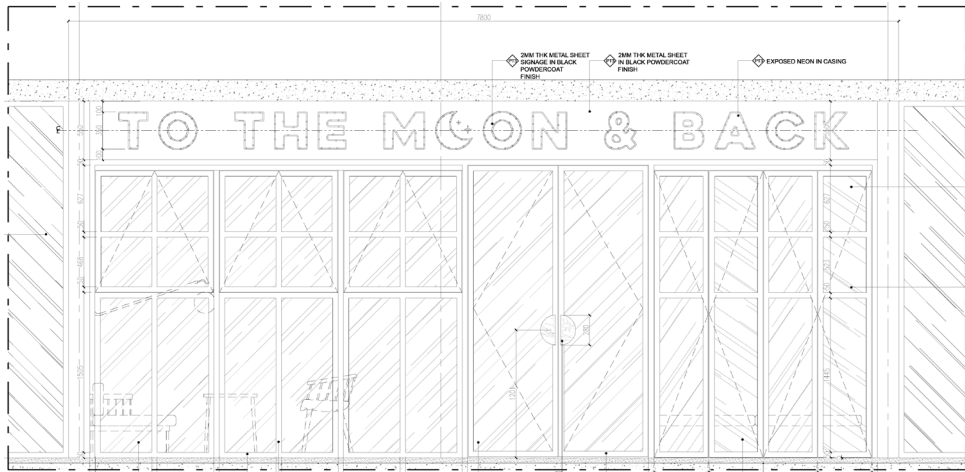
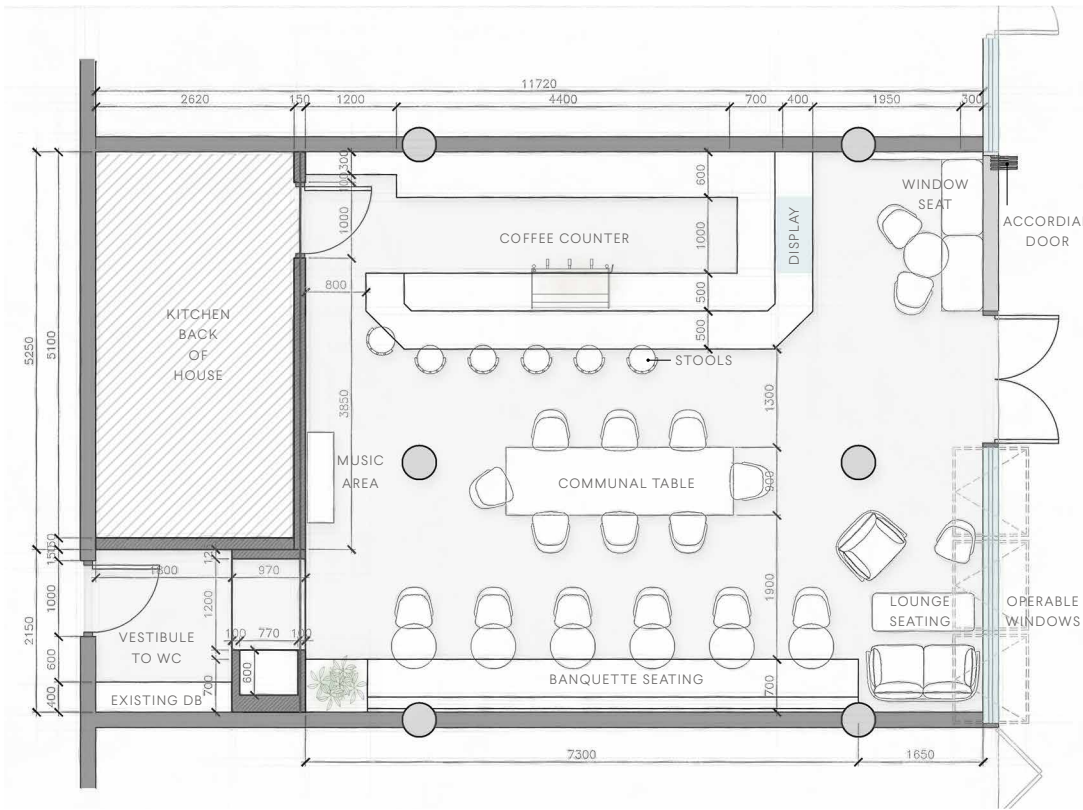
// minimal scandinavian



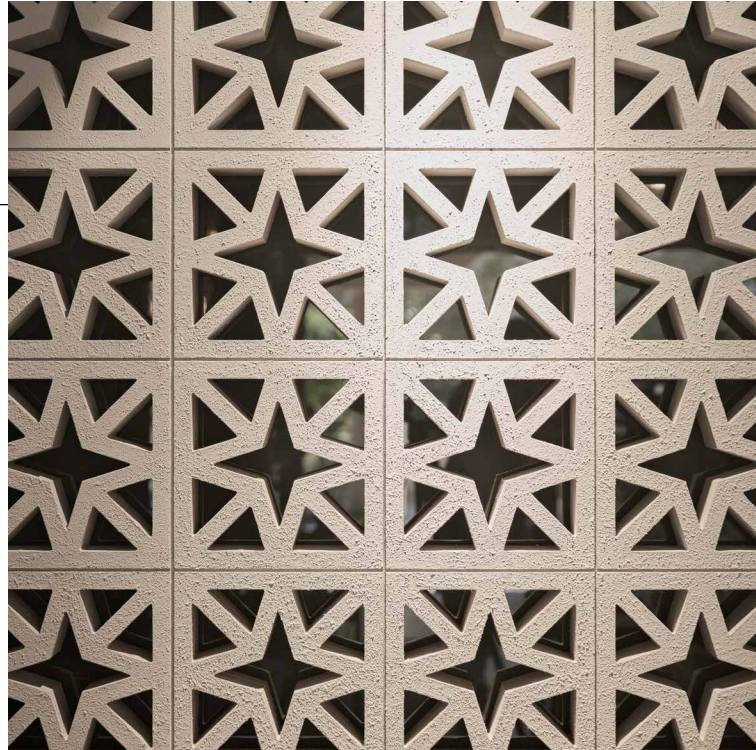
03/ TO THE MOON AND BACK.

LOCATION: Jumeriah, Dubai, UAE

Founded by two Emirati nationals, To The Moon and Back was inspired by the well-known speciality coffee concepts in Melbourne, Australia. They set about creating something that offers an otherworldly experience in Dubai, themed from the idea that "a good sip of coffee can take you to the moon and back". I developed this concept into a space-themed cafe with a laid-back and relaxed atmosphere; a refuge with great coffee and good vibes where every detail has been carefully considered. The galactic design is meant to be subtle, not too in-your-face, and accentuated in the details; the antiqued brass moon floor engraving, pearlescent column mosaics, mural artwork, and a custom astrological carpet. In the cooler months, the glass front of the shop can be opened up to offer an "outside-inside" experience with views of the surrounding greenery and peaceful courtyard. The comfortable seating ensures easy access to plug sockets, making it an ideal place to work, study, or just hang out.

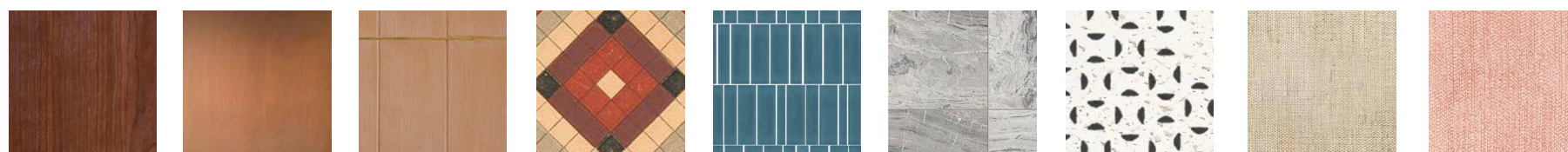
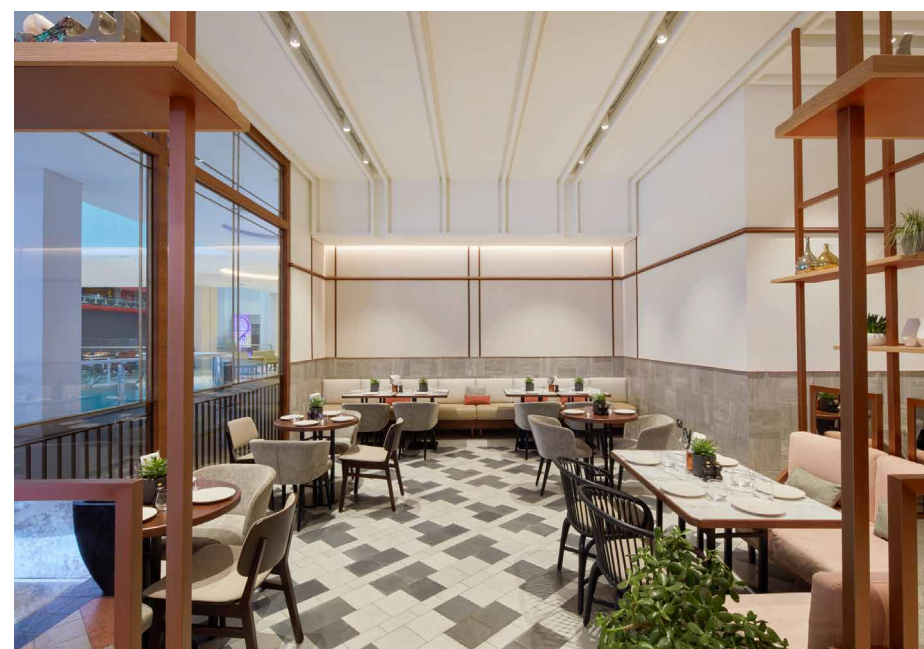


// modern quirky

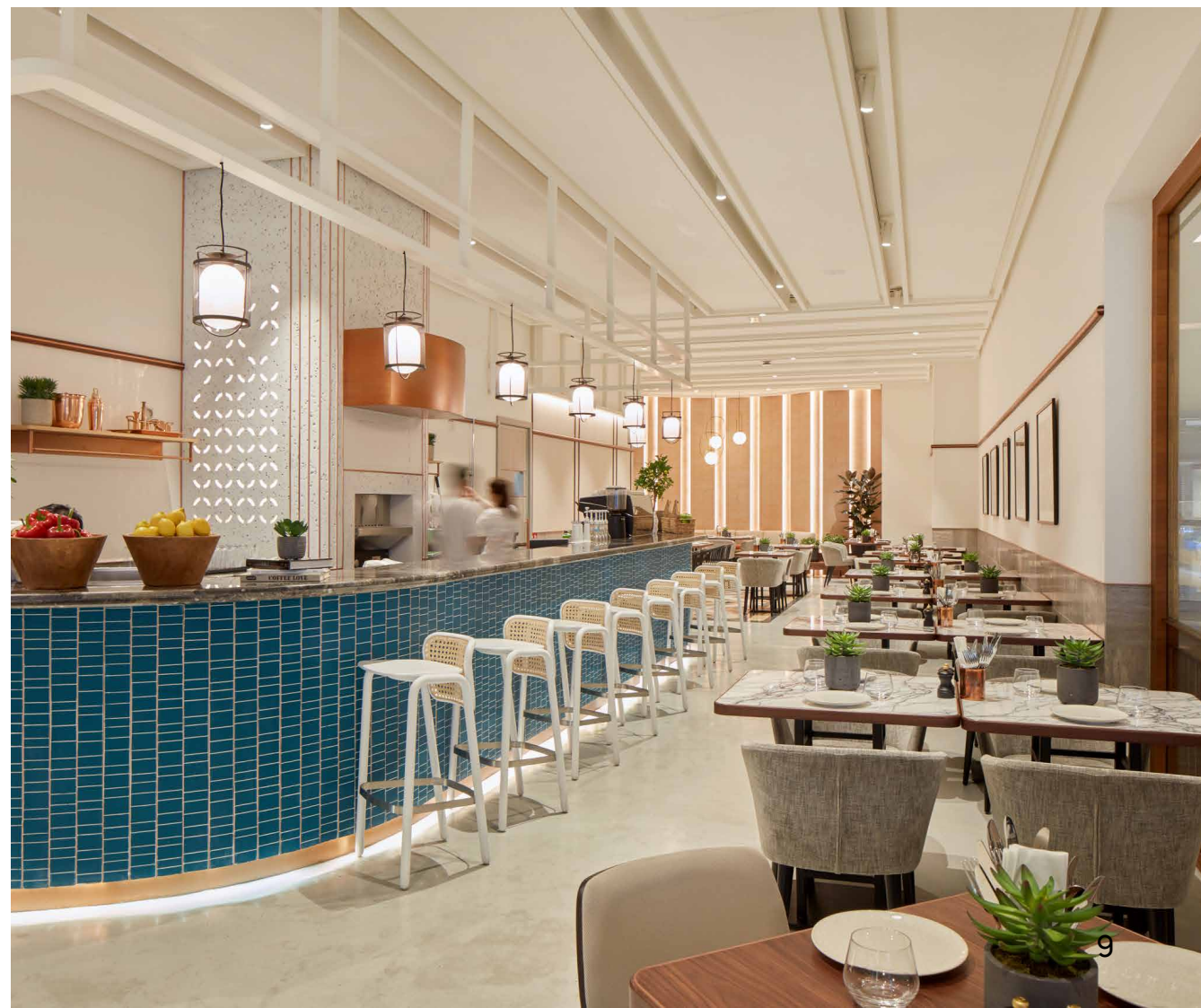
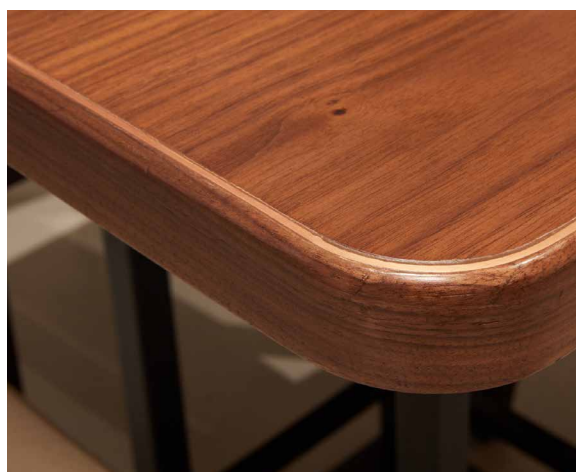
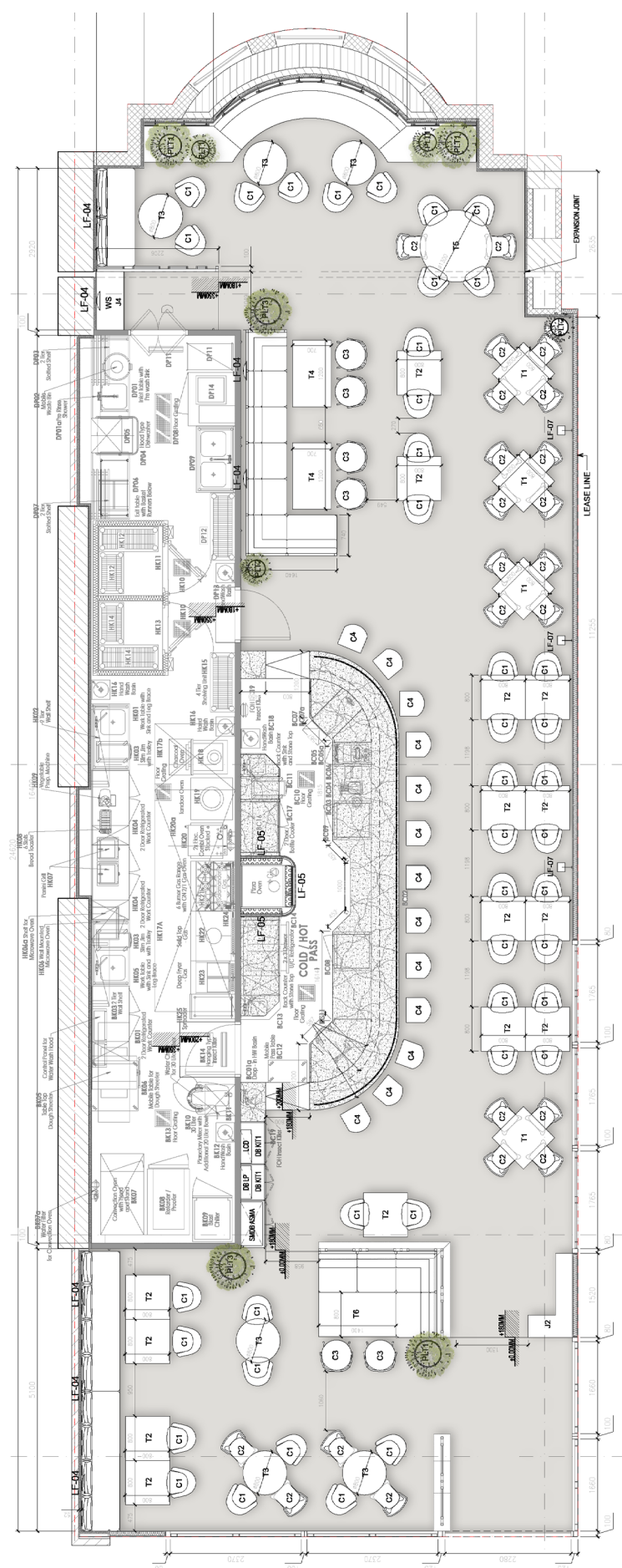


LOCATION: The Dubai Mall, Dubai, UAE

This homegrown concept was dreamed up by three Emirati sisters inspired to create an elegant eatery, and name it after their mother, Asma. The aim was to design a space that feels contemporary, chic, and upscale, yet homey. As the core of Asma comes from their creative menu, a blend of homemade Emirati recipes with a high-end twist, mixing the traditional with the contemporary is heavily represented in the interior to reflect this. Emphasizing the 'homelike' atmosphere, green plants, books, framed artwork, and photography were arranged in a contemporary setting featuring salmon-pink and off-white furnishings, marble and wooden tables.



// refined traditional



05 / MARASSI HUB HOTEL.



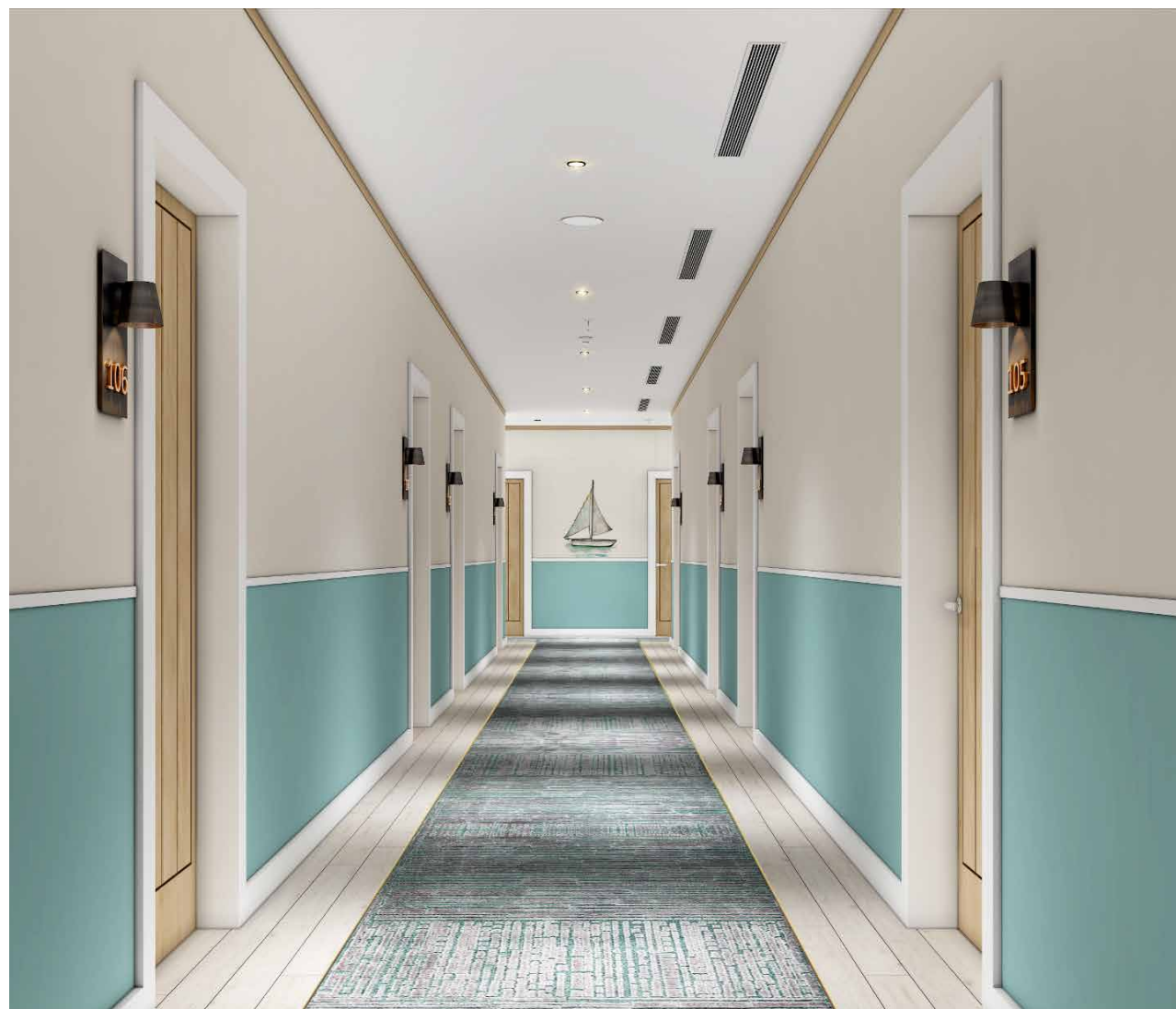
LOCATION: Marassi Village, Egypt

Located on Egypt's northern coast, Marassi HUB is a new Emaar development in the middle of Marassi Village. The goal was to create a relaxed and sophisticated environment for the hotel's guests by blending a more relaxed beach-style concept with an elegant Mediterranean atmosphere. We aimed to integrate the surrounding seaside environment into the nature of the property by using natural timber, light and breezy elements reflecting the coastal region, including fabrics and upholstery which were suitable for a beach environment. The color palette chosen reflects the tones found in the surrounding shorelines, emphasizing the natural beauty of the location.



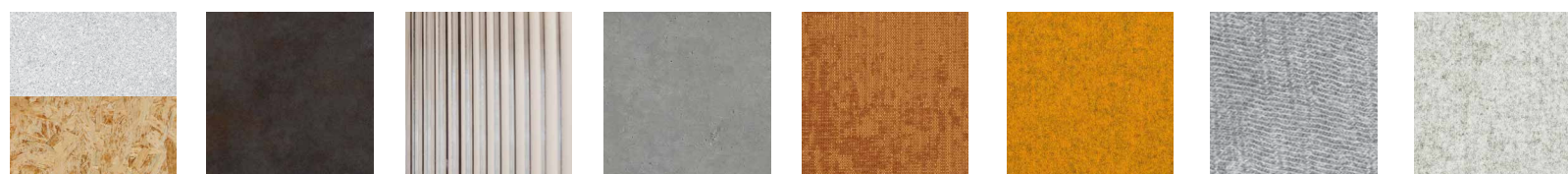
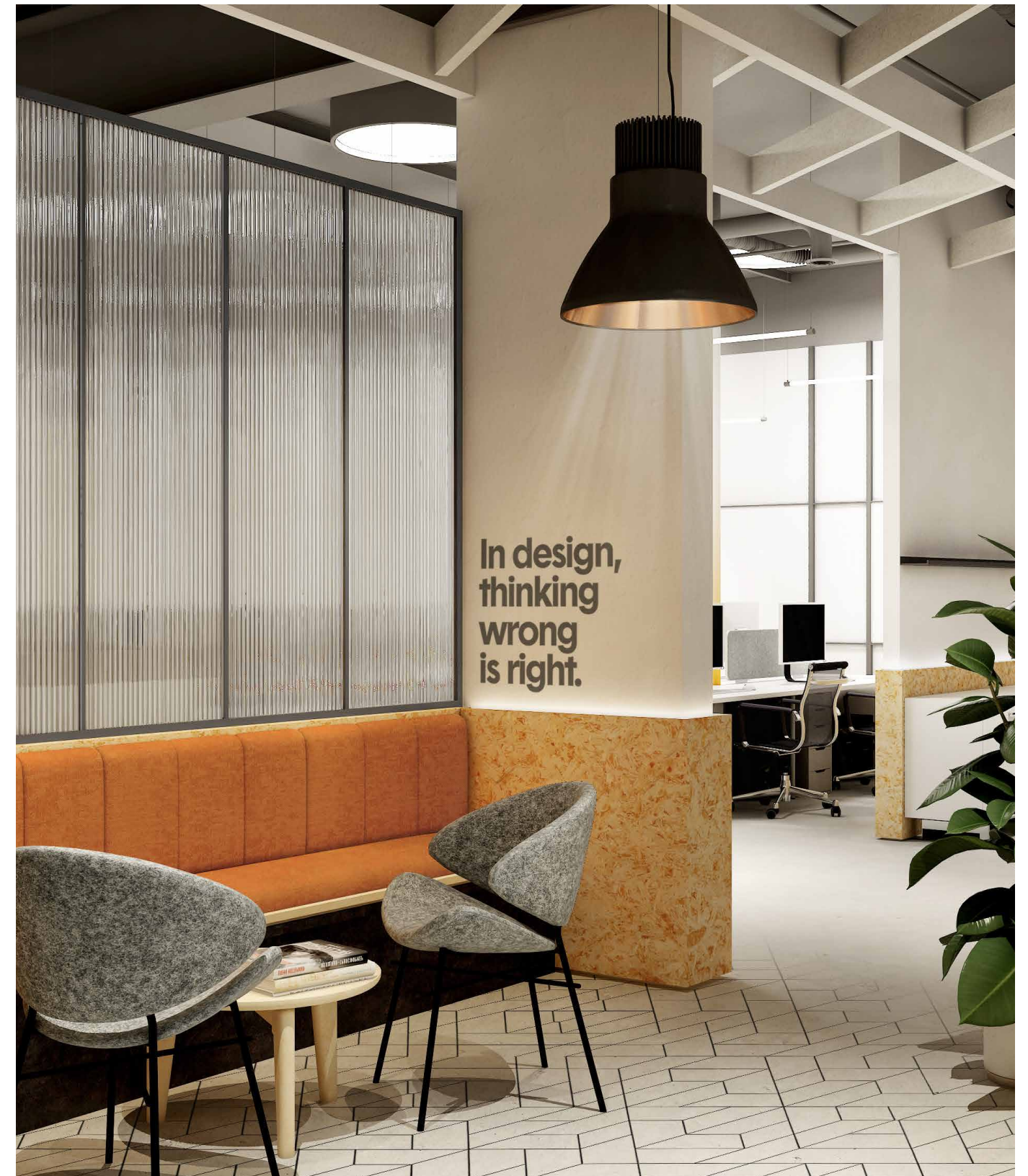


//boho chic

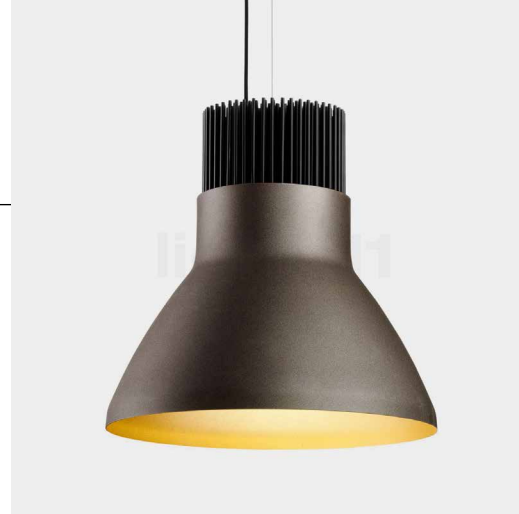
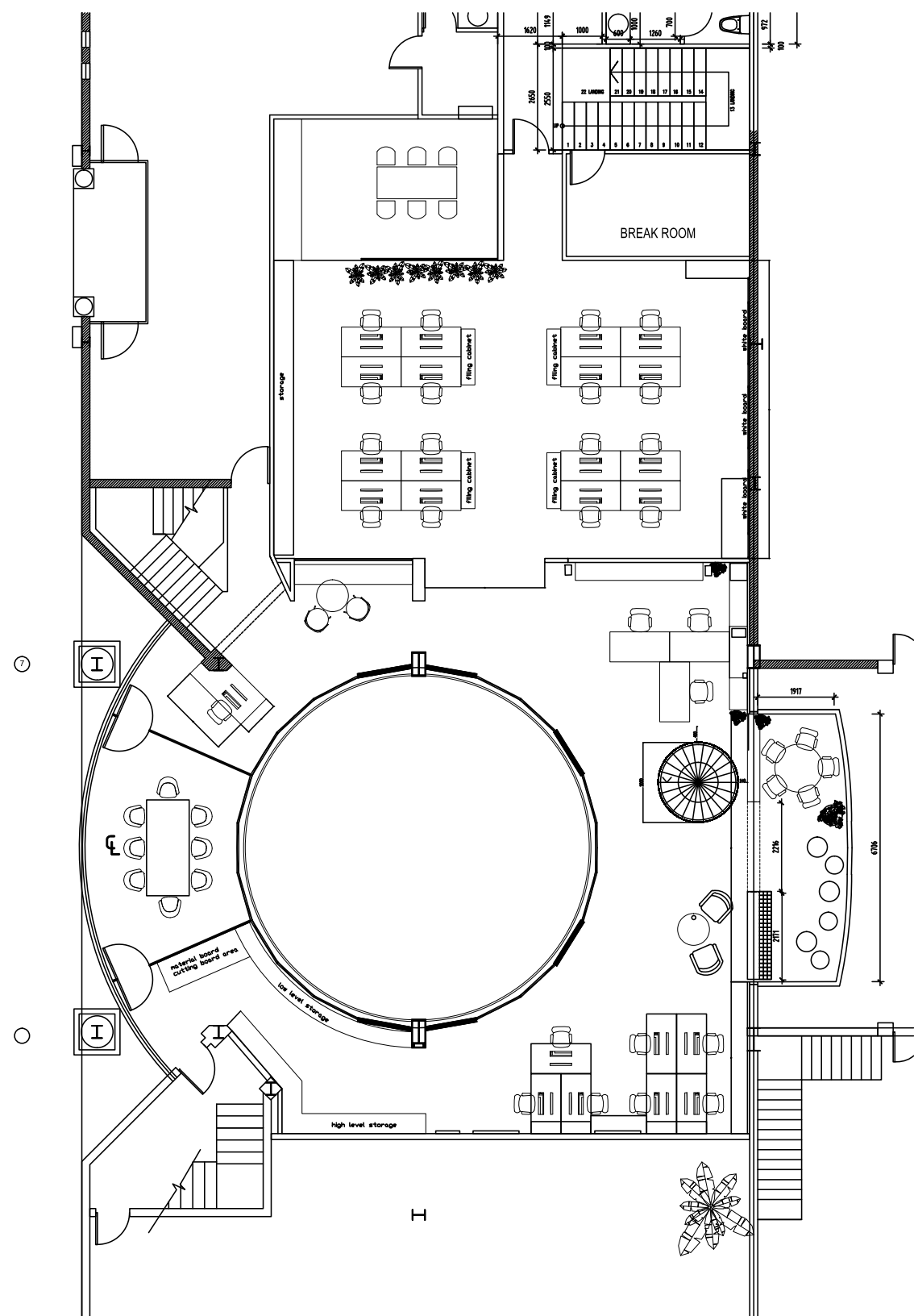


LOCATION: The Courtyard, Dubai, UAE

Tasked with the renovation of the H2R Design office, our team proposed the concept that the atmosphere of the office should reflect the overall identity of the brand: young and contemporary. The goal was to refurbish the space to function more practically, while preserving much of the original architectural elements: concrete floor, metal framing, and a glazed central feature. The floor plan promotes collaboration and active workspaces, so employees maintain a constant awareness of all projects. The resulting design, and the materials used, provided more adequate storage, comfortable seating areas, and the encouragement to work more creatively.



// contemporary industrial



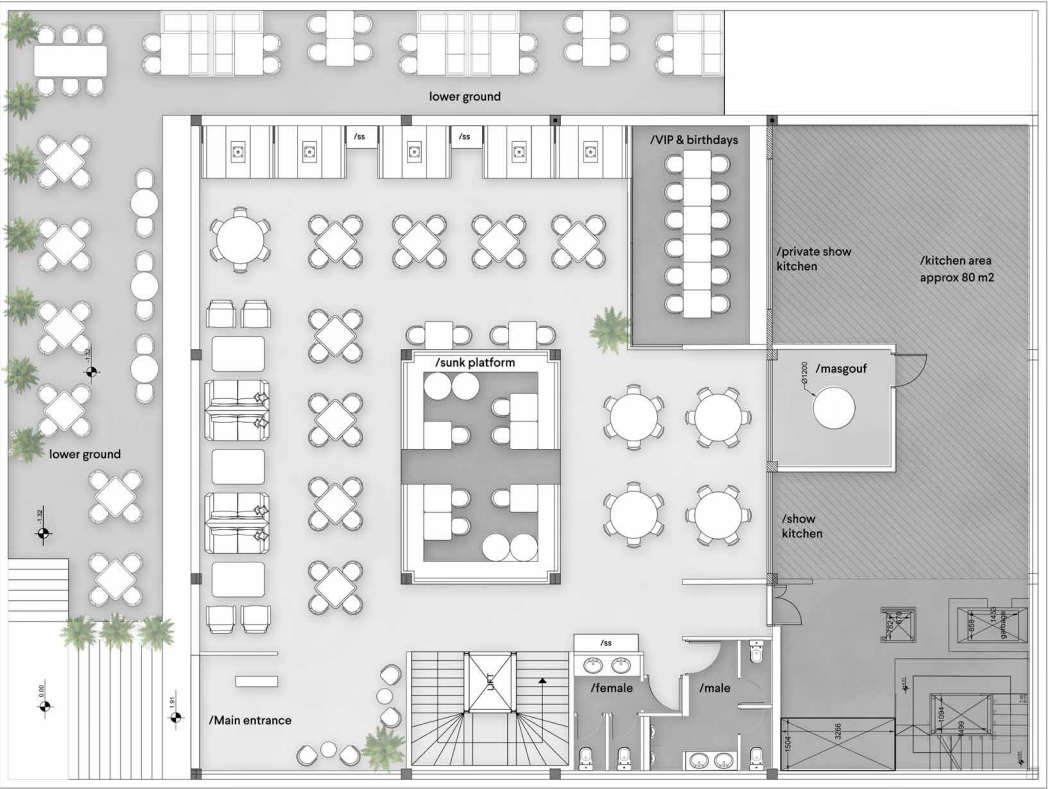
07/ JOUMAARA.

LOCATION: Baghdad, Iraq

This restaurant concept, located in Baghdad, was intended to have a modern, fresh, and welcoming atmosphere, with a design that stands out from the more traditionally designed restaurants common in the city. The space focuses on catering to the women of the household, as the owner wanted a restaurant where the mother of the house would be comfortable, coming back again and again with her family. As the restaurant occupies two levels, upon entering, customers are struck by the high ceilings and bright natural lighting. The show kitchen and masgouf grill are the main features of the design, forming a threshold to a more intimate space. VIP rooms, featured on both floors, give the opportunity for large groups and events to be hosted in privacy. The upper floor features a retractable glass roof, creating an outdoor terrace to match the garden seating below. The combination of wooden ceilings, custom-designed furniture, textures in the white tin-tiled wall, soft lighting with the bright colors of the upholstery, tiles, and green foliage, give the restaurant a relaxed and compelling environment with a comfortable and friendly atmosphere.



Ground Floor



First Floor





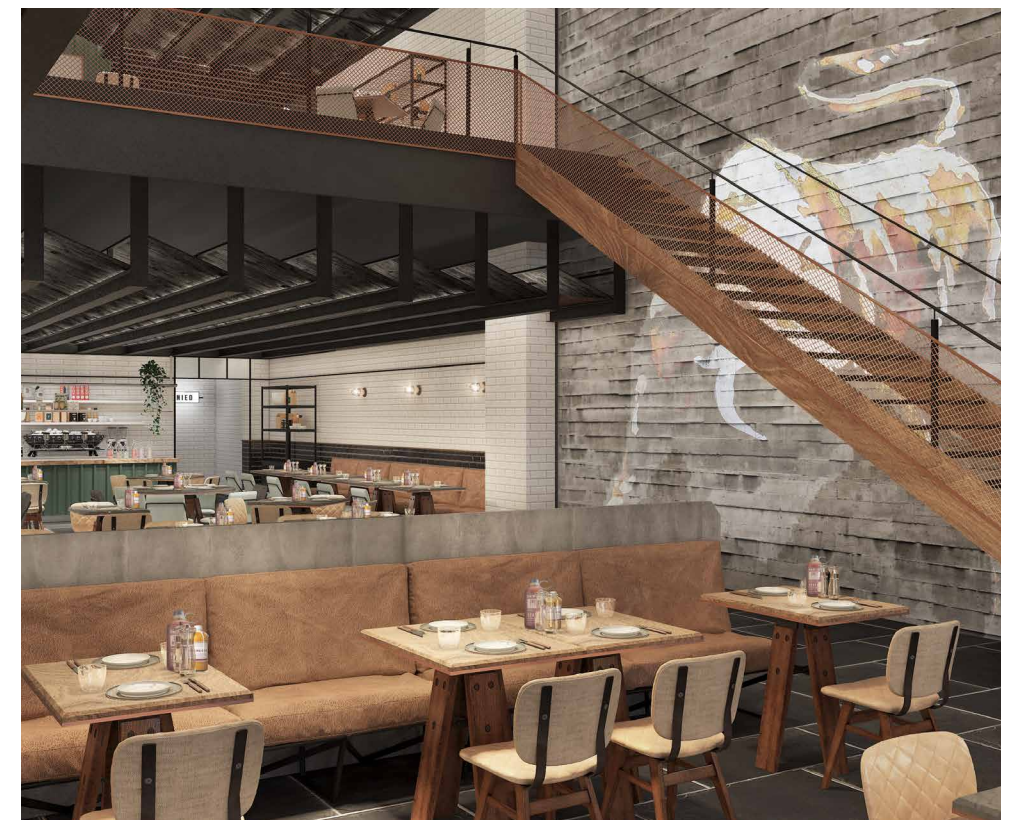
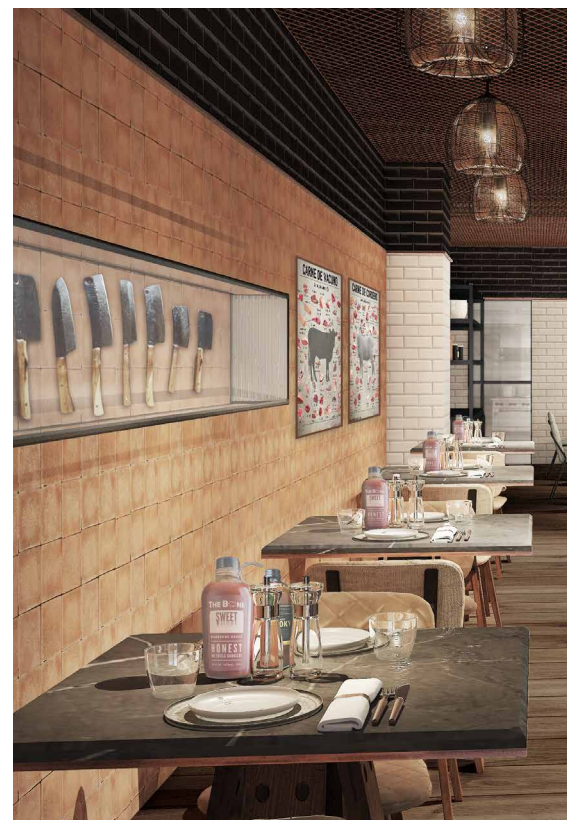
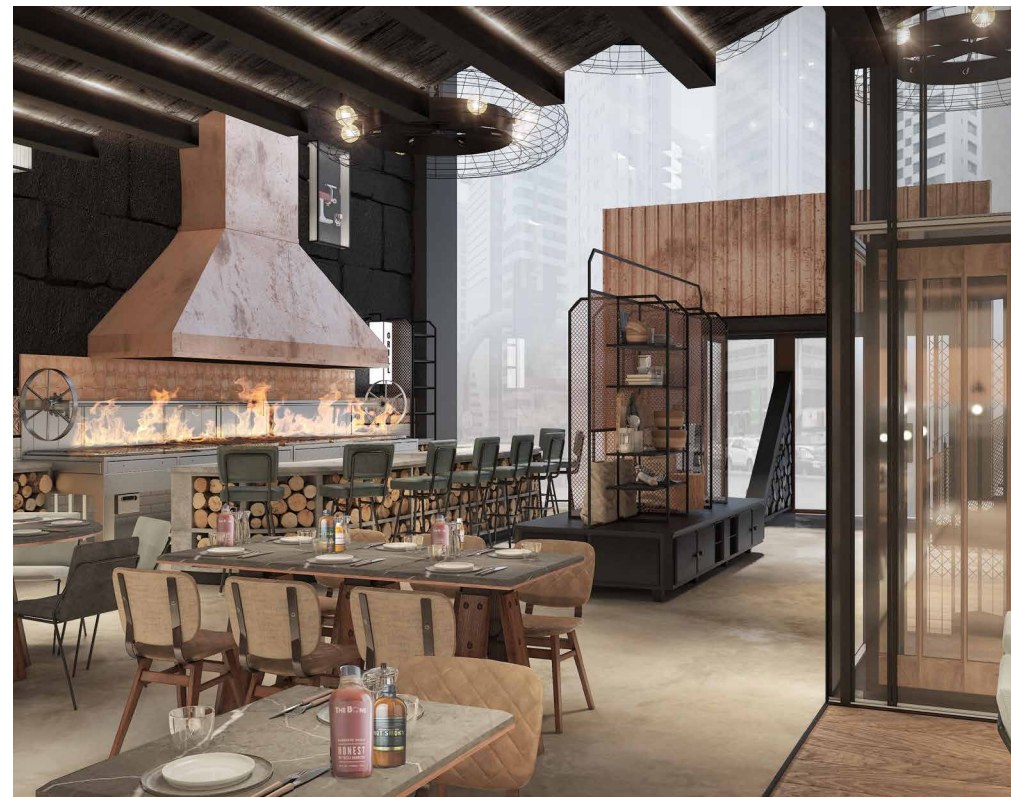
// old to new



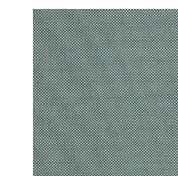
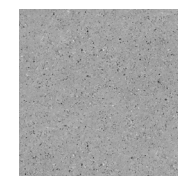
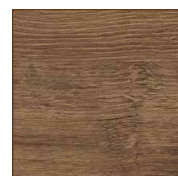
08 / CHARCOAL

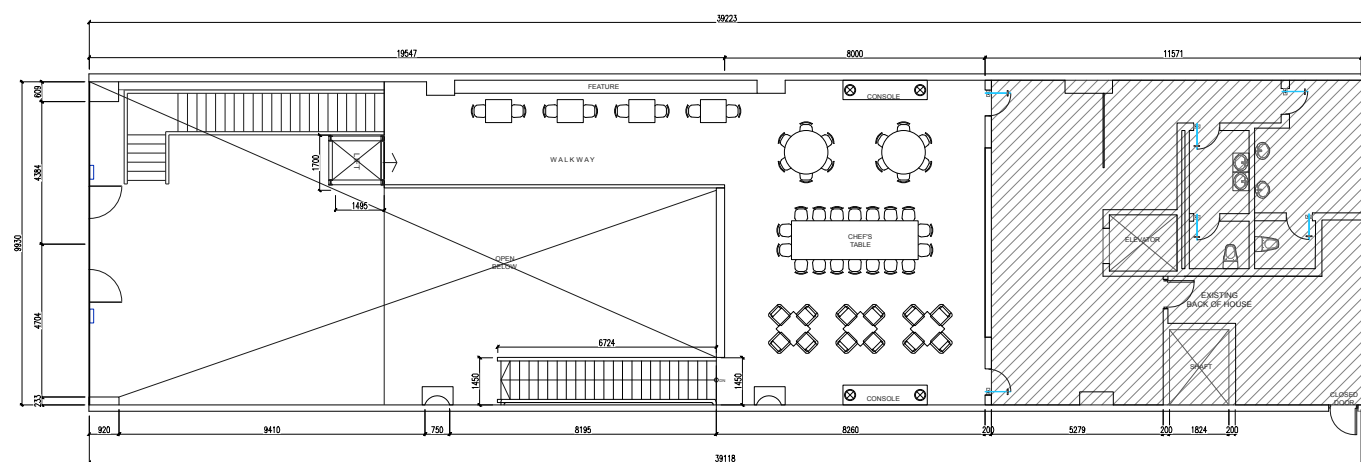
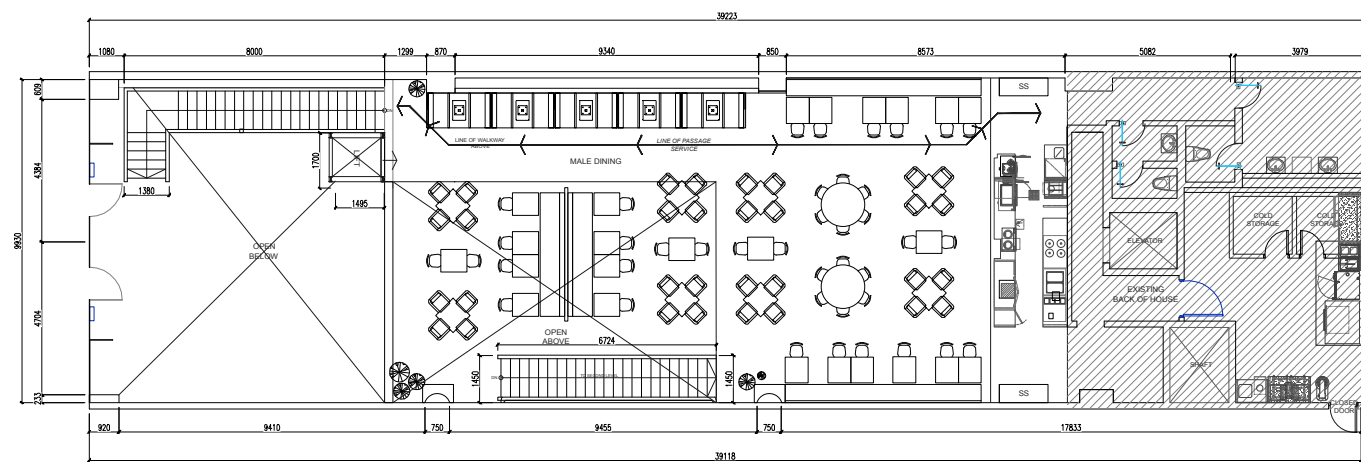
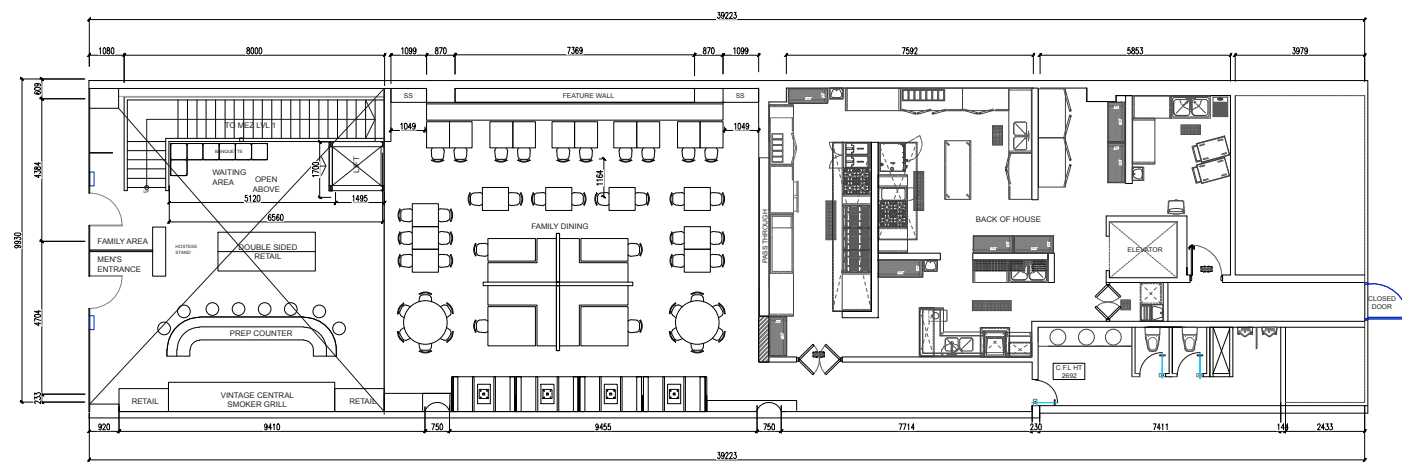
LOCATION: Riyadh, Saudi Arabia

Charcoal was founded by two sisters who wanted to create a grill house concept in Riyadh which appealed to women as well as men, aiming to broaden perspectives while creating a dynamic and inviting space. Keeping this in mind, we designed the entrance of the three level restaurant with a large fire grill and a tall wall of utensils in glass displays, creating an eye-catching experience. The restaurant's interior is realized in black and gray tones with accents of bright copper and timber details in the decoration to bring femininity and warmth to the space. Black and white butcher tiles are used throughout, paying tribute to the origins of the butchery/grill-house concept.



// industrial refinement





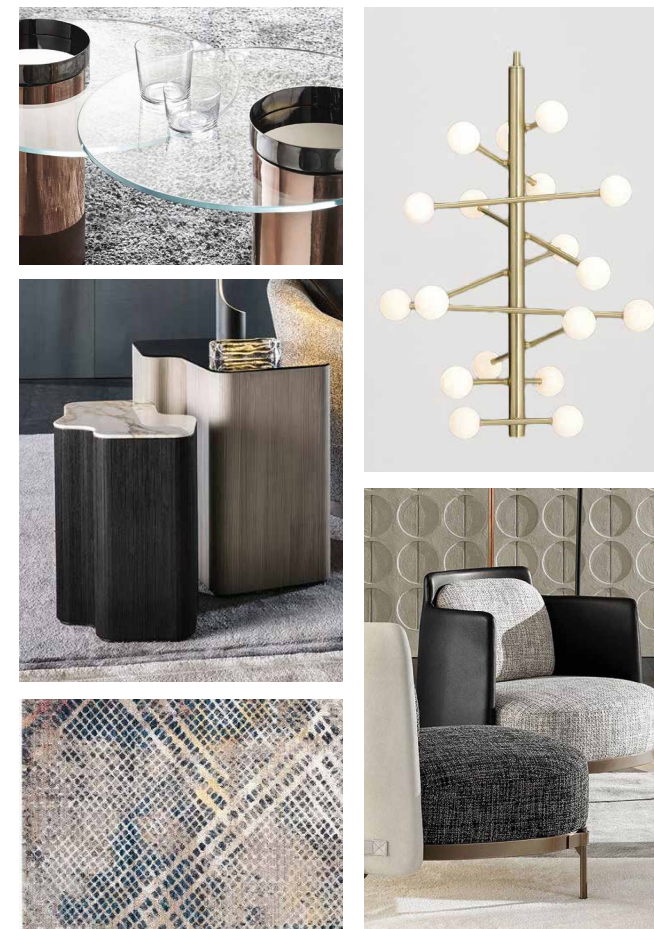
LOCATION: The Dubai Mall, Dubai, UAE

A concept proposal for a retail showroom/shop dedicated to His Highness Sheikh Mohammed bin Rashid Al Maktoum and His achievements.

OPTION 1: Cartography

This concept revolves around the configuration of a space around one's self, a space in which one's being is translated into different levels, a space where one will gain an insight into a Great Person's life and accomplishments, personality and lifestyle, soul and spirit.

This space will represent an intricate human map, one that embraces His Highness's personality on a personal, spiritual and professional level.



OPTION 2: Transparency and Reflection

An open invitation into one's person, one's mind, one's world. Transparency being the translation of purity of soul, unmasked and revealed existence, Reflection connotating the faith and honor in one's own people.

This space will be a reflection of His Highness's personality and aspiration to work hand in hand with his people for the establishment of a better world, a stronger nation, and a solid unity; a space where sharing one's lifestyle & values contributes to one same vision.

10/ GRAND WALK.

LOCATION: The Dubai Mall, Dubai, UAE

A proposal for the refurbishment of an existing section of Dubai Mall: Grand Walk. The idea was to keep the existing structure, only updating finishes and art installations to activate the space and revitalize the environment. We aimed to create visual connectivity using bulkhead, balustrade, ceiling, and floor treatments; allowing the customer experience to be enhanced through architecture. The natural light flow of the space is enriched with the use of reflective and translucent materials. Suspended ceiling features are designed to visually join different floor levels, allowing for artistic ornamentation to the existing architectural ceilings. The suspension of LED screens creates a continuous 'wave' that forms a strong connection between each section of the Walk.

